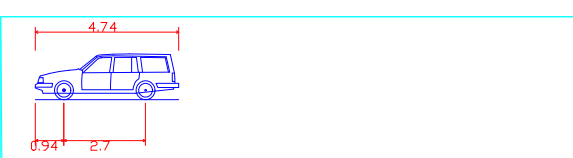
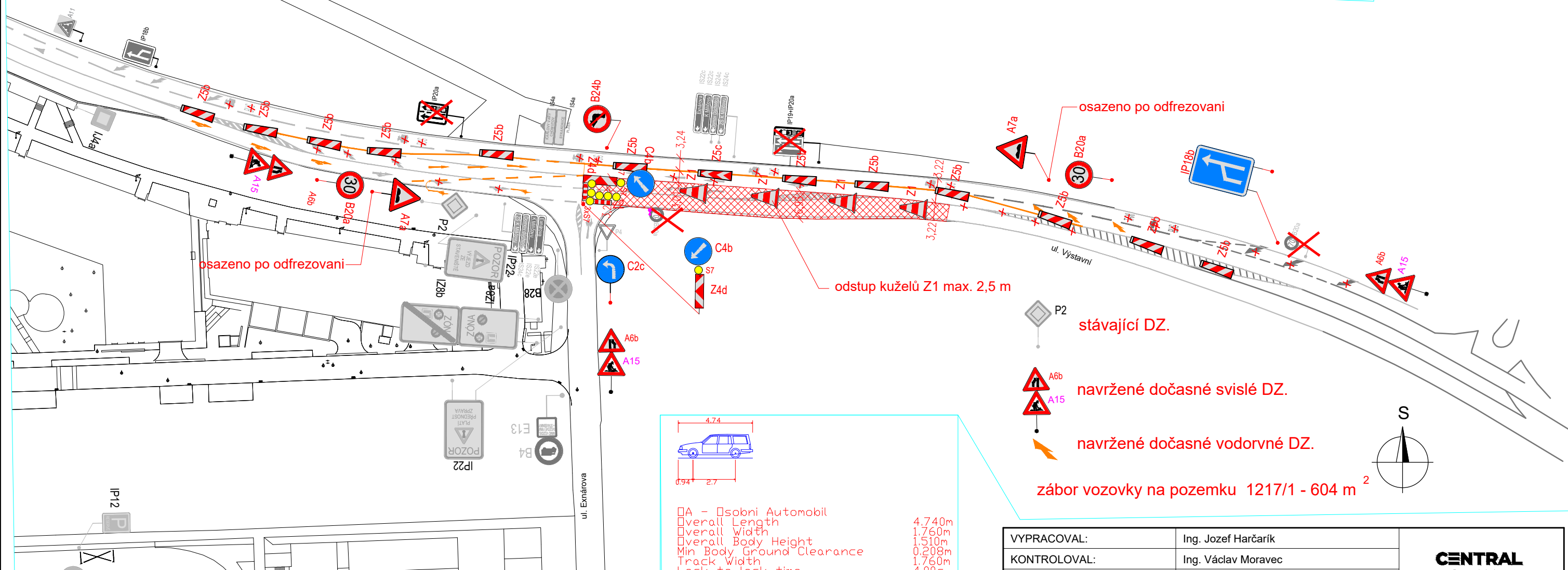
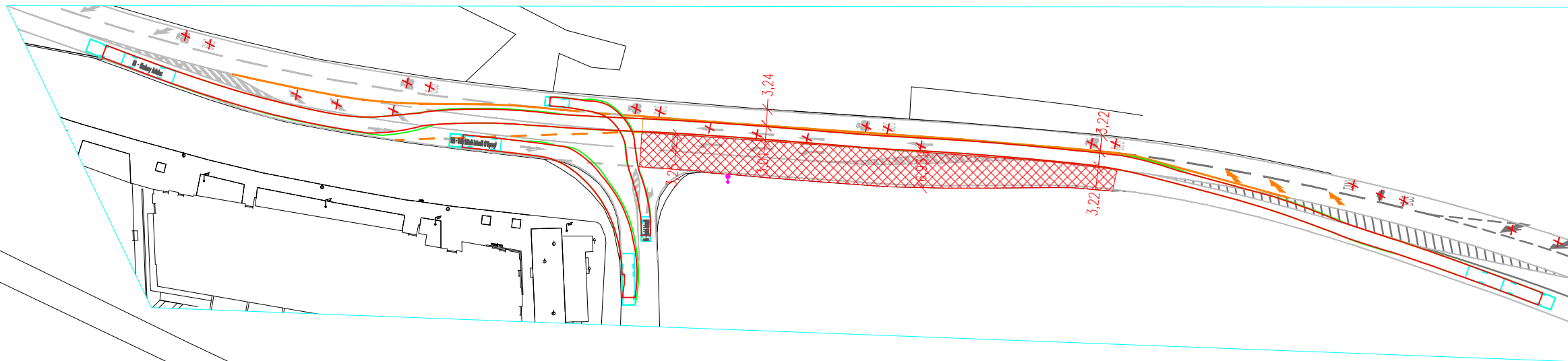
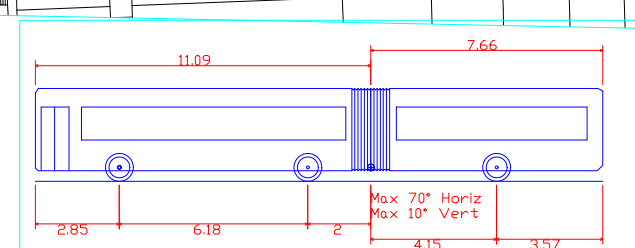


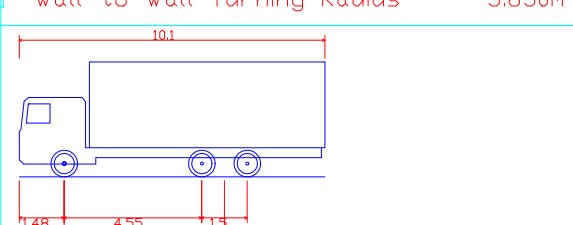
VLEČNÉ KŘIVKY:



OA - Osobní Automobil
 Overall Length 4.740m
 Overall Width 1.760m
 Overall Body Height 1.510m
 Min Body Ground Clearance 0.208m
 Track Width 1.760m
 Lock to lock time 4.00s
 Wall to Wall Turning Radius 5.850m



KA - Iveco Streetway 18
 Overall Length 18.750m
 Overall Width 2.540m
 Overall Body Height 3.425m
 Min Body Ground Clearance 0.340m
 Track Width 2.540m
 Lock to lock time 6.00s
 Wall to Wall Turning Radius 11.800m



VNA - Velký Nakladní Automobil (3 Naprawy)
 Overall Length 10.100m
 Overall Width 2.500m
 Overall Body Height 3.800m
 Min Body Ground Clearance 0.427m
 Track Width 2.500m
 Lock to lock time 6.00s
 Wall to Wall Turning Radius 10.050m

- stávající DZ.
- navržené dočasné svislé DZ.
- navržené dočasné vodorvné DZ.
- záběr vozovky na pozemku 1217/1 - 604 m²

VYPRACOVAL:	Ing. Jozef Harčarik
KONTROLOVAL:	Ing. Václav Moravec
INVESTOR:	CENTRAL GROUP Háje a.s.
MÍSTO STAVBY:	Praha 11, Háje / Praha 15, Petrovice

CENTRAL GROUP		
		ČÍSLO ZAKÁZKY: 125
		DATUM: 10/2025
		MĚŘÍTKO: 1:1000
STUPEŇ: DPS		
PŘÍLOHA: 03		

AKCE:	ÚPRAVA KŘÍŽOVATKY "VÝSTAVNÍ x EXNÁROVA" Praha 11, 15
OBSAH:	OBNOVA POVRCHU ul. VÝSTAVNÍ DIO. - 3